

# Comparison of quantities and measures

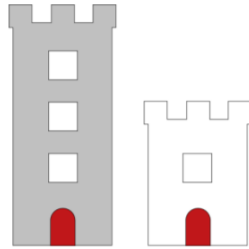
1. It is important to compare items using the correct language.

Distance:



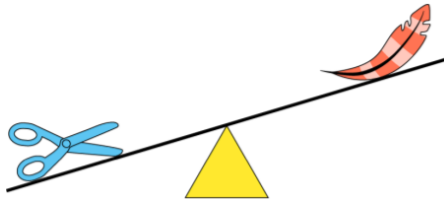
The spotty snail went **further** than the stripy snail.  
The stripy snail went **less far** than the spotty snail.

Height:



The grey tower is **taller** than the white tower.  
The white tower is **shorter** than the grey tower.

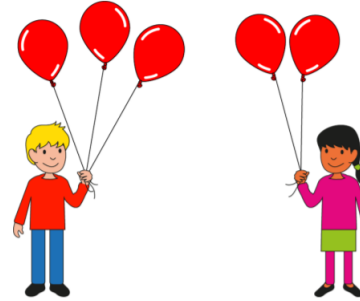
Mass:



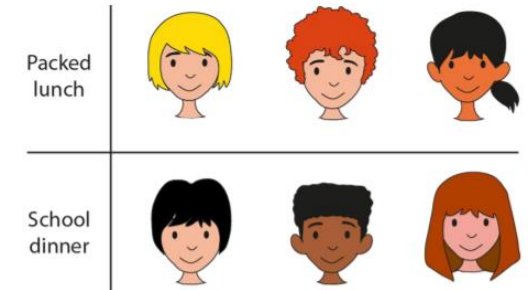
The scissors are **heavier** than the feather.  
The feather is **lighter** than the scissors.

2. When comparing two sets of objects:

- One set can have **more** than the other
- One set can have **fewer** than the other
- Both sets can contain the **same** number of objects.

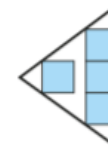
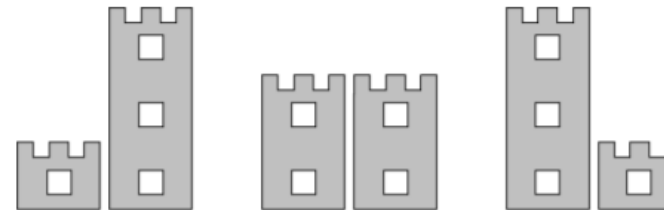


The boy has **more** balloons than the girl.  
The girl has **fewer/less** balloons than the boy.

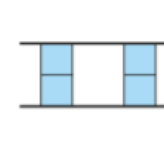


The number of children having packed lunches is the **same** as those having school dinners.

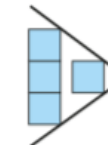
3. The symbols **<**, **>** and **=** can be used the number objects in two groups or the size of two numbers.



1 < 3



2 = 2



3 > 1

< represents 'is less than'  
> represents 'is more than'  
= represents 'is equal to'